

CREATIVE PARK

<http://www.canon.com/c-park/>



This paper craft is an ogre mask, perfect for throwing beans at for Setsubun (Bean-throwing Festival). Put it on and see yourself turn into a scary ogre! Have fun pretending to be ogres in these masks!



Tools	Notation Key
Scissors	— Scissors line
Paste, or woodwork glue Mountain fold
Stencil pen, or bodkin	- - - Valley fold
Ruler	+ Glue spot
	⊙ Glue the back
	A1, B1 Parts No.

◆ These assembly parts are separated into Block A (forehead, mouth, and chin) and Block B (eyes, nose, horns, hair, and belt). Read the assembly instructions for each block to complete the mask.

<Caution>

- ※ Keep scissors and glue away from small children.
- ※ Be careful not to cut your fingers when using scissors.
- ※ Wearing a mask may reduce your field of vision. Be careful not to fall over or bump into anything.
- ※ Be careful not to scratch the skin of your fingers, neck, etc. when wearing the mask.

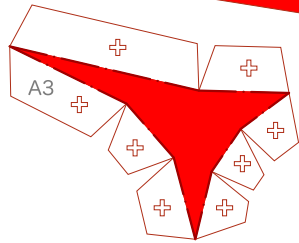
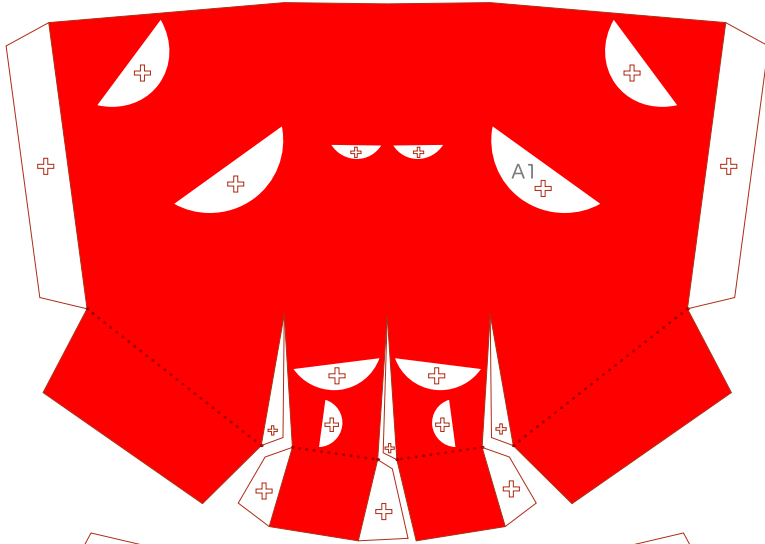




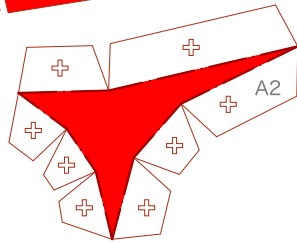
Forehead parts

Refer to Assembly Instructions: Page1 / Page2.

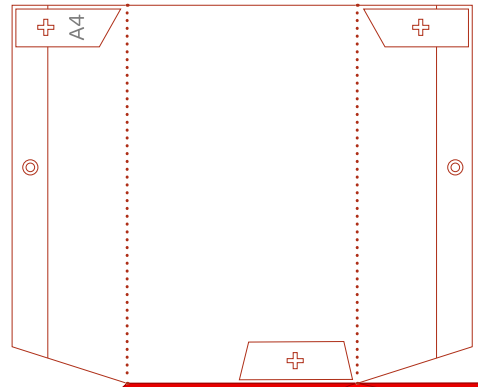
A1 Forehead



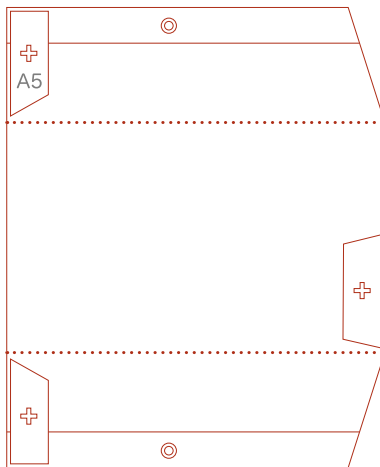
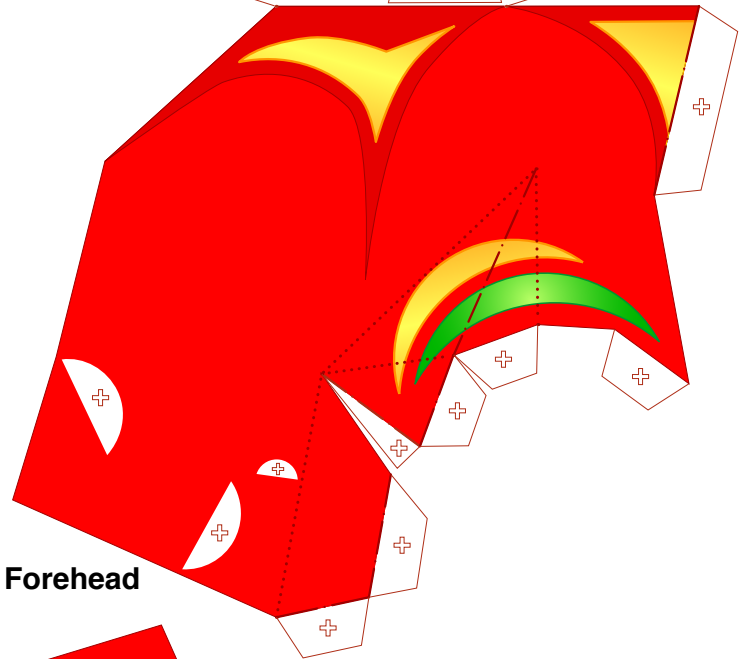
A3 Forehead



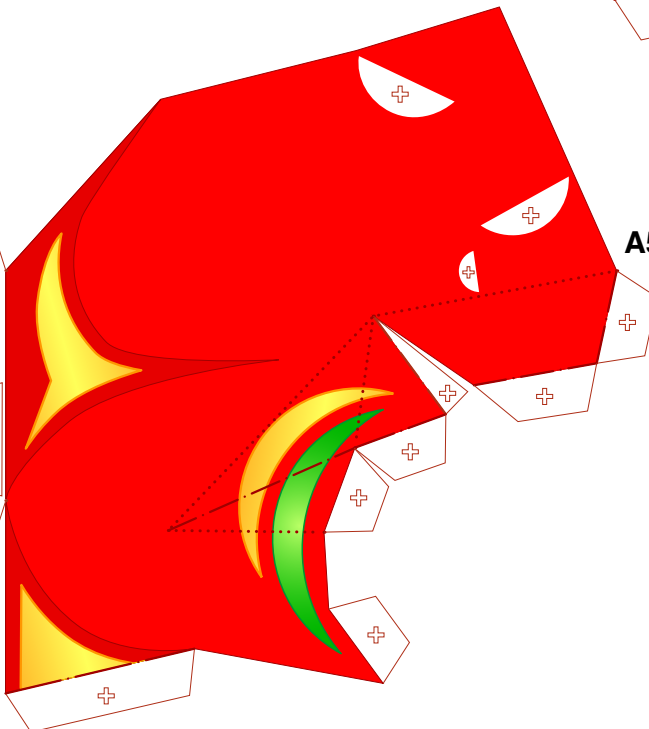
A2 Forehead



A4 Forehead



A5 Forehead

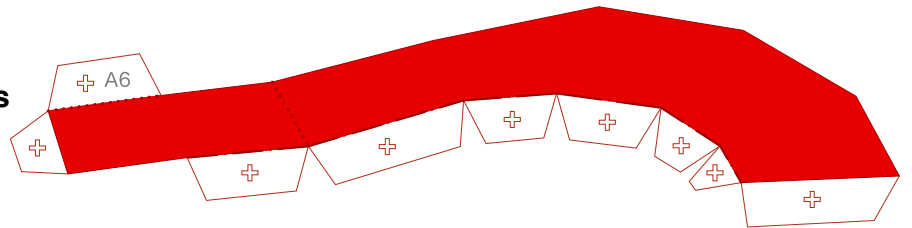




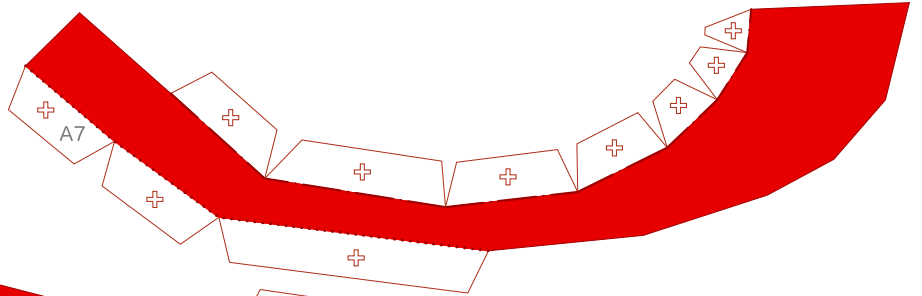
Mouth parts

Refer to Assembly Instructions: Page2.

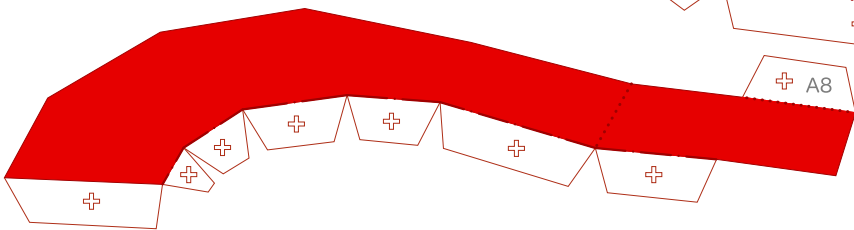
A6 Lips



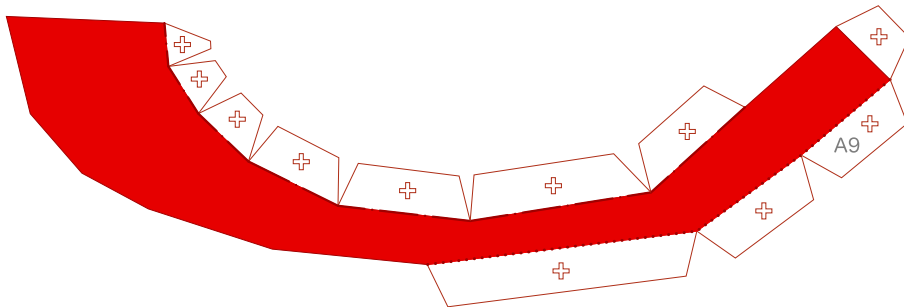
A7 Lips



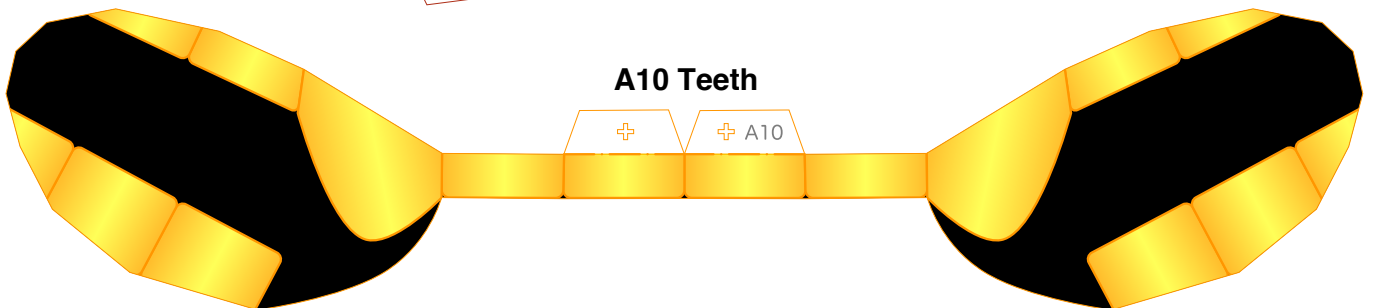
A8 Lips



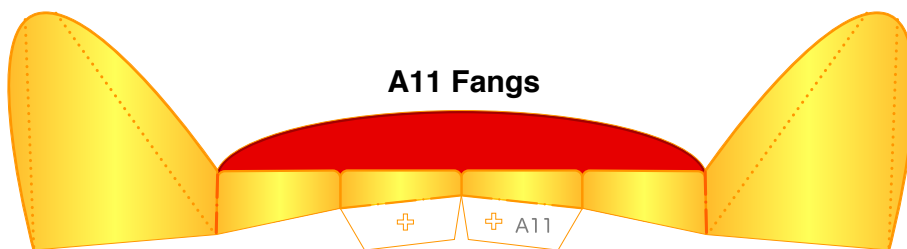
A9 Lips



A10 Teeth



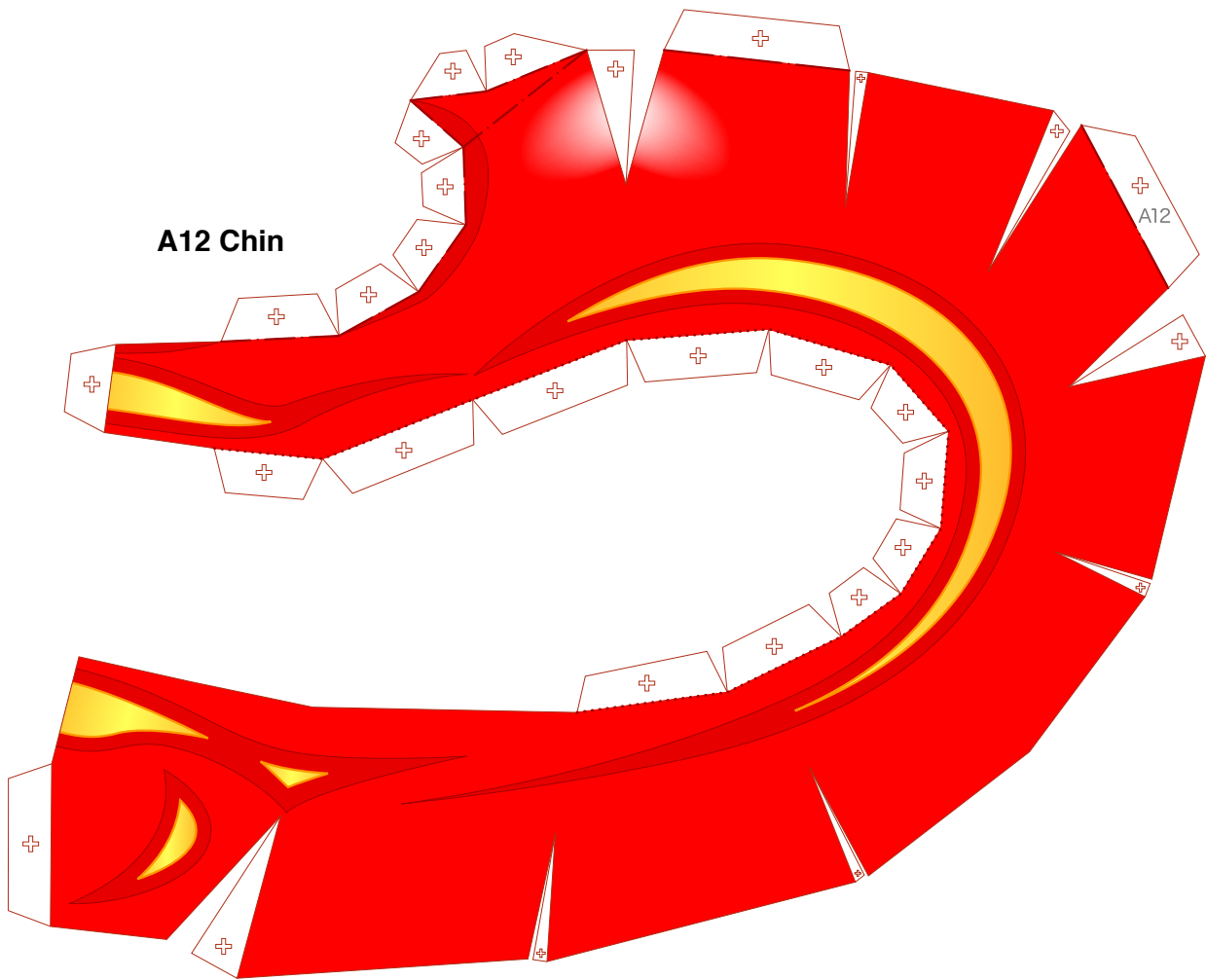
A11 Fangs





Chin parts

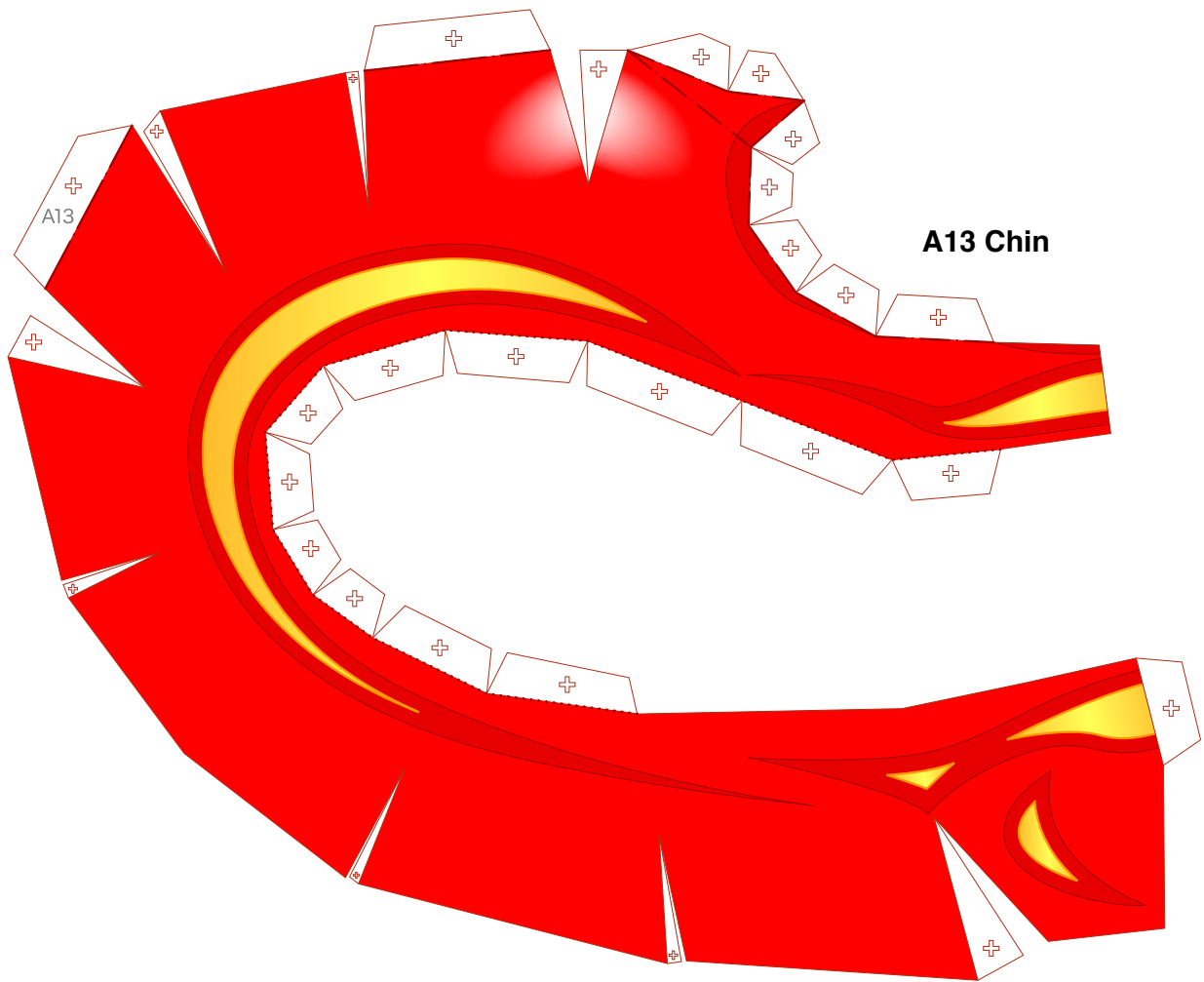
Refer to Assembly Instructions: Page2.



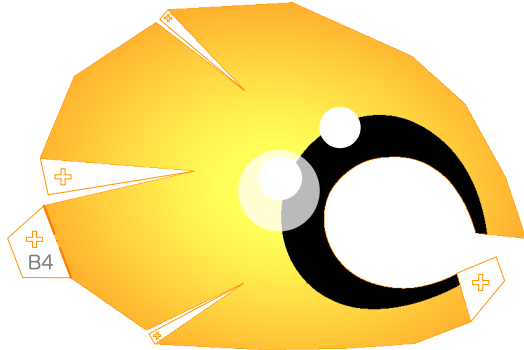


Chin parts

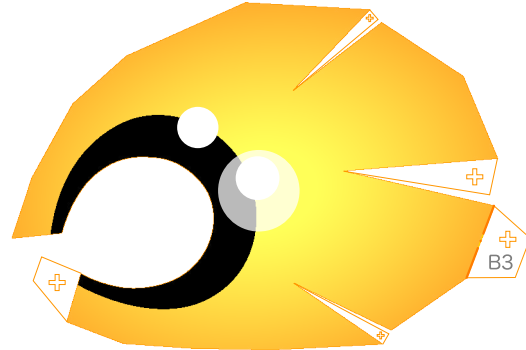
Refer to Assembly Instructions: Page2.



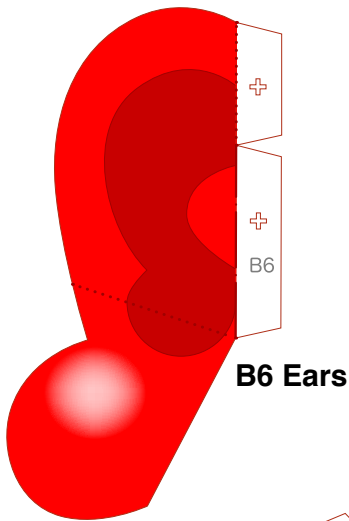
B Eye and nose parts
Refer to Assembly Instructions: Page2 / Page3.



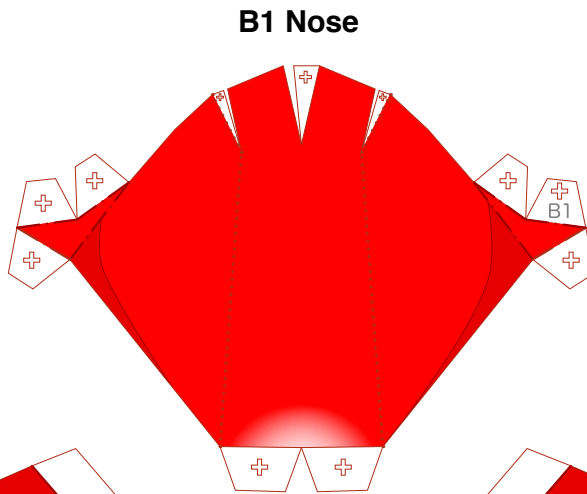
B4 Eyes



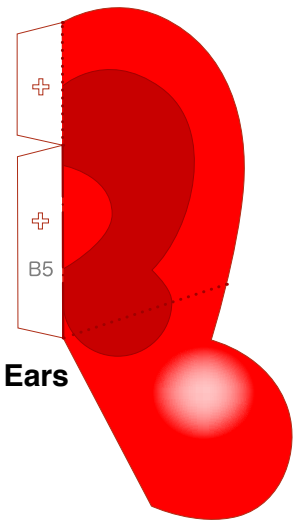
B3 Eyes



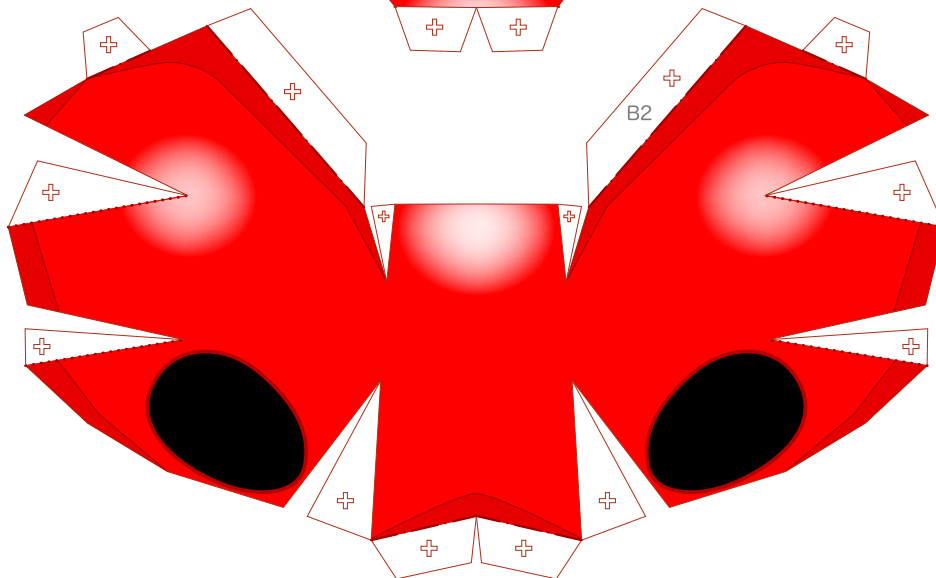
B6 Ears



B1 Nose



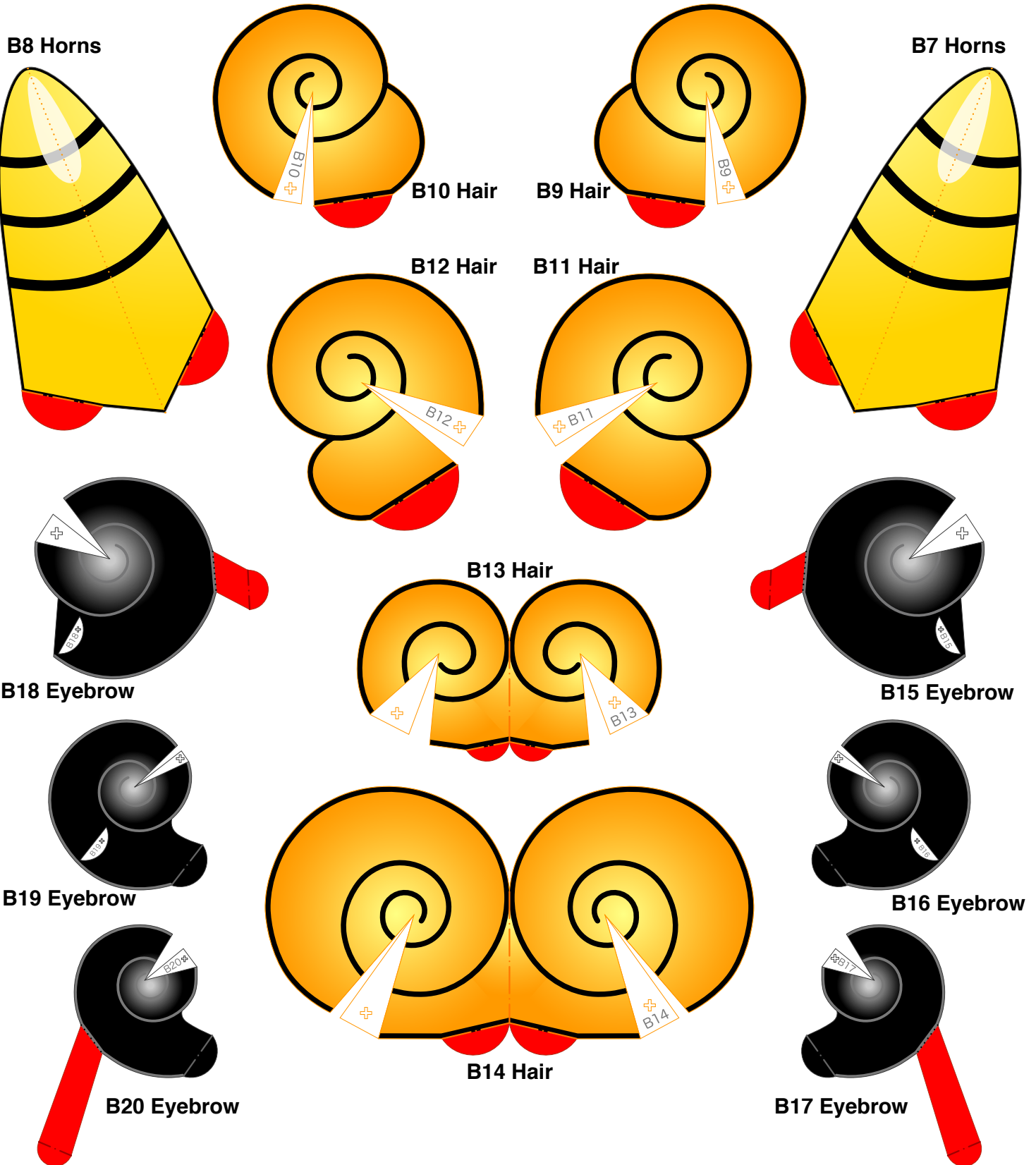
B5 Ears



B2 Nose

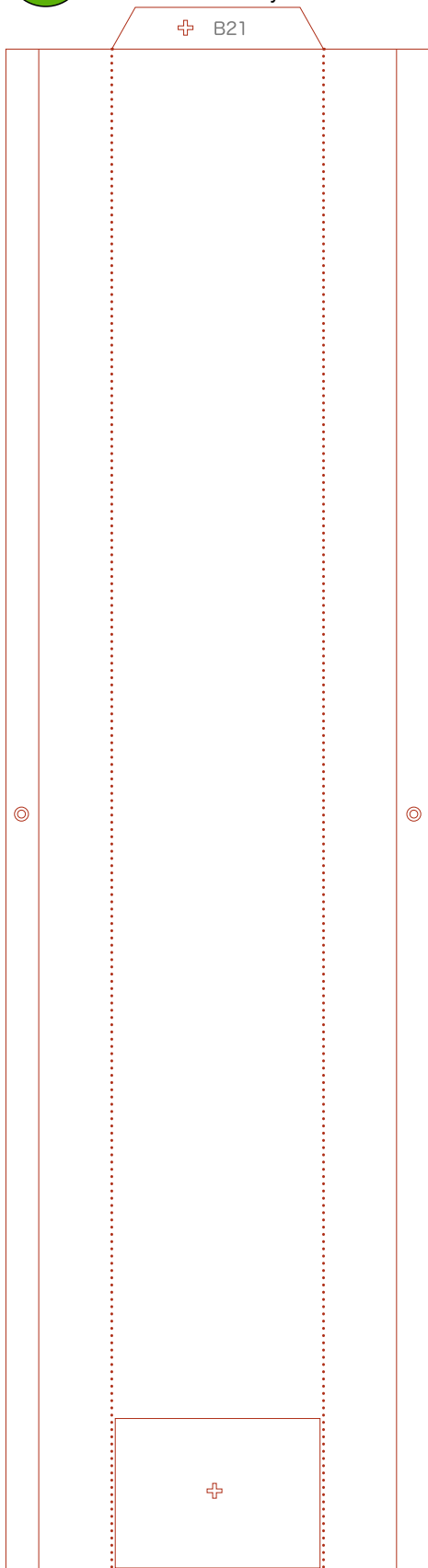
B Horn and hair parts

Refer to Assembly Instructions: Page3.



B Belt parts

Refer to Assembly Instructions: Page3.



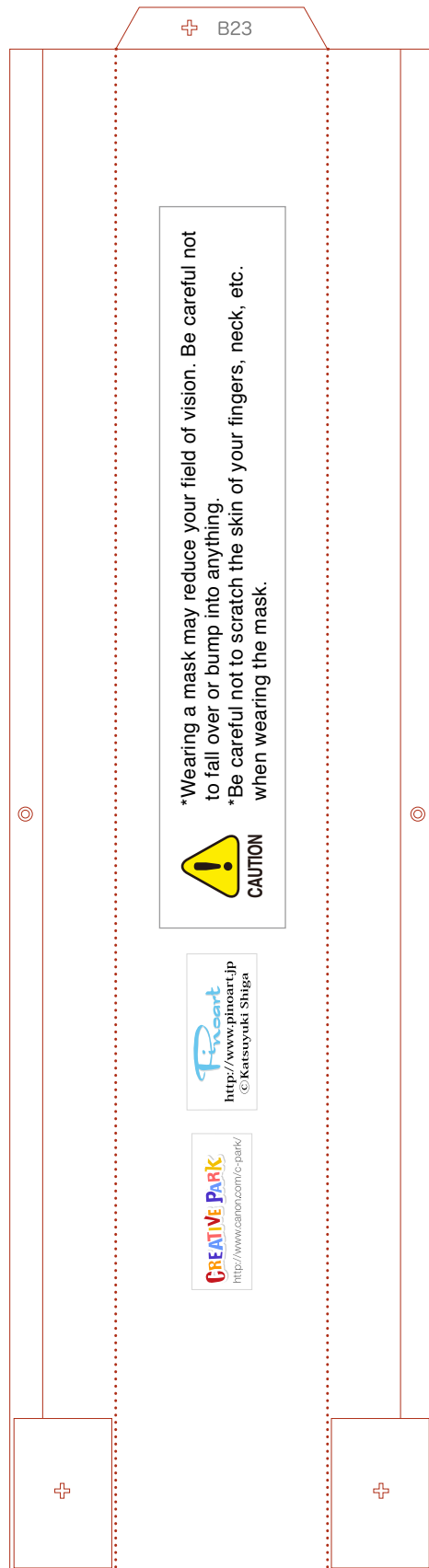
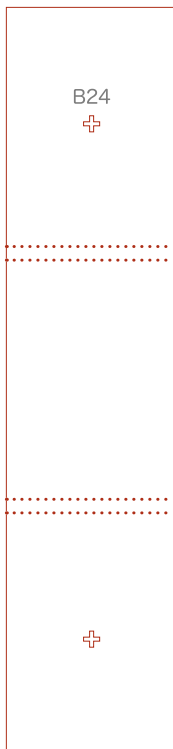
B21 Belt

B22 Joint



B23 Belt

B24 Joint



*Wearing a mask may reduce your field of vision. Be careful not to fall over or bump into anything.
*Be careful not to scratch the skin of your fingers, neck, etc. when wearing the mask.

