



### Assembly Instructions

..... **Mountain fold** (dotted line)      ——— **Scissors line** (solid line)  
\*Make a mountain fold.                      \*Cut along the line.

- - - - - **Valley fold**  
(dashed and dotted line)  
\*Make a valley fold.

▲ **Black triangle**  
Glue here

△ **White triangle**  
Glue the back



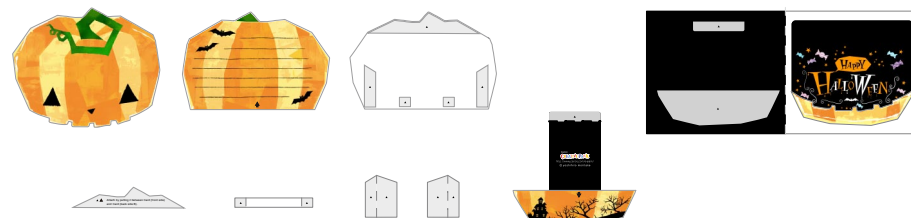
**You will need**

scissors, paste, a used ballpoint pen (tracing along the fold lines makes them easier to fold)



**Caution:** Glue, scissors, and other tools may be dangerous to young children so be sure to keep them out of the reach of young children.

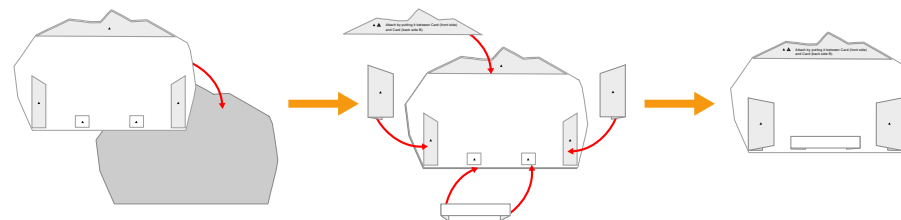
**1** Cut out the parts and fold them along the fold lines on each.



**2** Fold Message (front side) in half and apply some glue. Then, cut each out according to its shape. Attach the illustration part of Message (back side) to the glue tabs of Message (front side).



**3** Attach Card (back side B) to the back side of Card (back side A). Then, attach glue tab A, Guide A, and Guide B, matching the shape of each respective glue tab.



**4** Put the Message (back side) from step 2 through Guide A from step 3, put the tip and the glue tab together, and attach. Attach the Card (front side) so that it covers glue tab A, Guide A, and Guide B, and you're done!



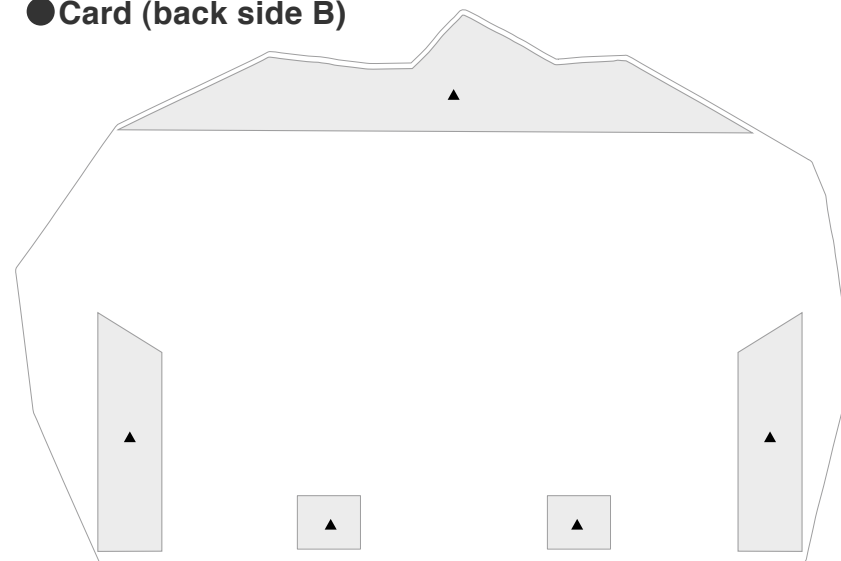
● Card (front side)



● Card (back side A)



● Card (back side B)



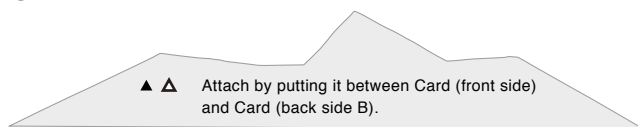
● Message (back side)



● Message (front side)



● Glue tab A



● Guide A



● Guide B



● Envelope



Assembly Instructions

