



Toco Toucan

Toco toucans are birds that live in the tropical rainforests of South America. Approximately 55-65 centimeters tall, they are the largest of all toucans. Their bright yellow beaks make them truly unique-looking. For food, they mostly eat fruits and insects. Because they are friendly birds, they are extremely popular at zoos.

This papercraft is about one half the size of a real Toco Toucan.

Assembly Instructions

- 1) Carefully cut out the parts.
- 2) Make mountain folds and valley folds along the dotted lines, as indicated by the directions.
- 3) Assemble the parts in the order shown by the numbers on the glue tabs. (Read the assembly instruction for more information.)
- 4) Attach the parts in order. (Read the assembly instruction for more information.)
- 5) Your Paper craft model is finished.


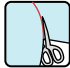



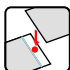
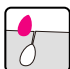
Tools

Scissors, glue (We recommend a strong adhesive such as woodwork glue.)

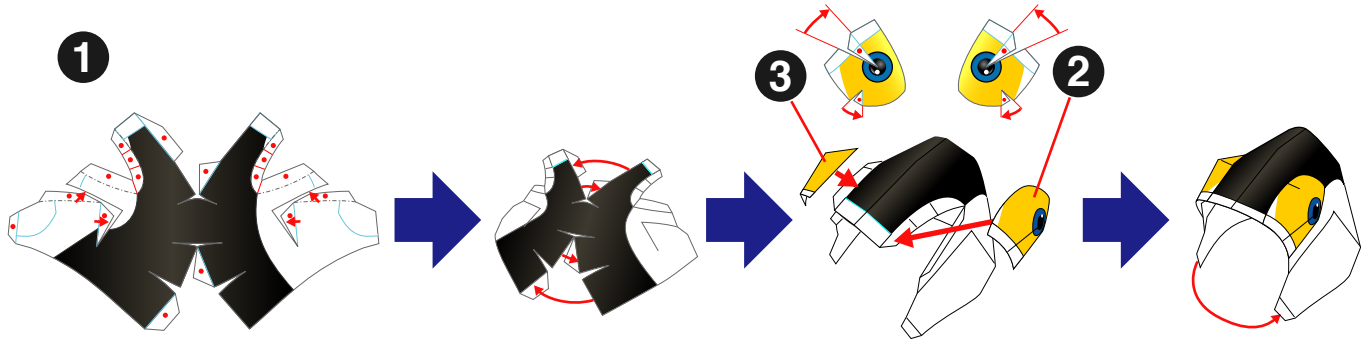
Caution

- Keep glue away from small children.
- Be careful not to cut your fingers when using scissors.

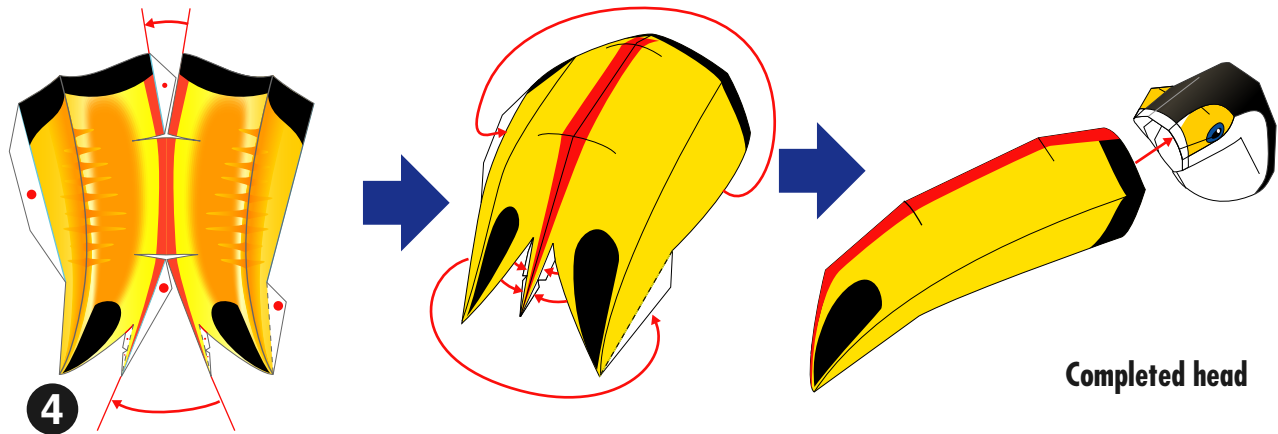
Notation Key

	—————	Scissors line
	—————	Cut in line
	—————	Glue up to this line
	- - - - -	Mountain fold
	- - - - -	Valley fold
	●	Glue spot
	■	Cut out

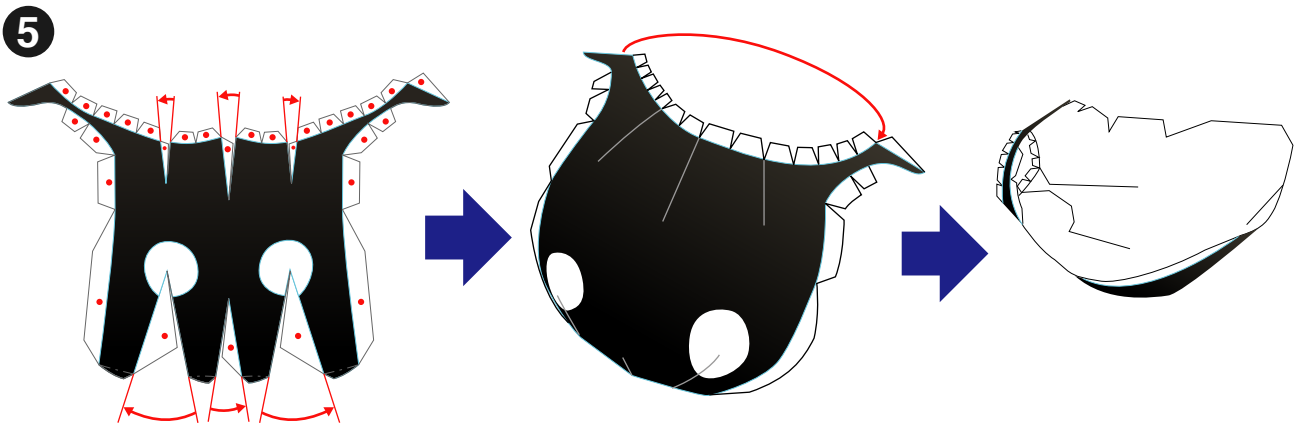
Assemble ① and attach ② and ③ to make the head.



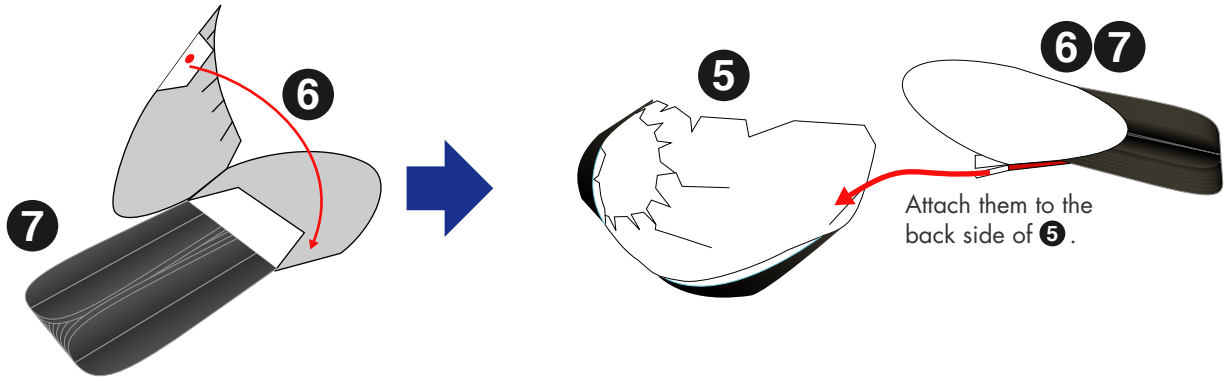
Assemble ④, make the beak, and attach it to the head.



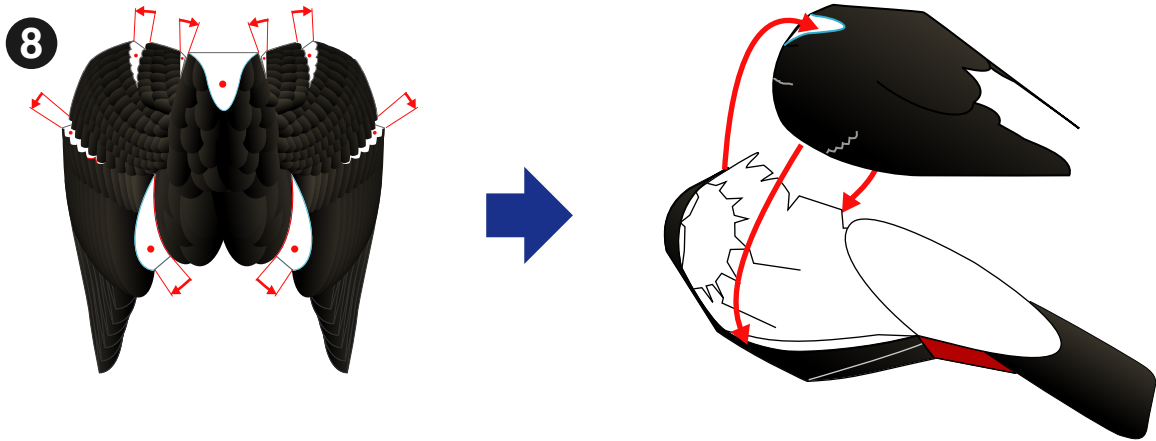
Assemble ⑤ and make the body.



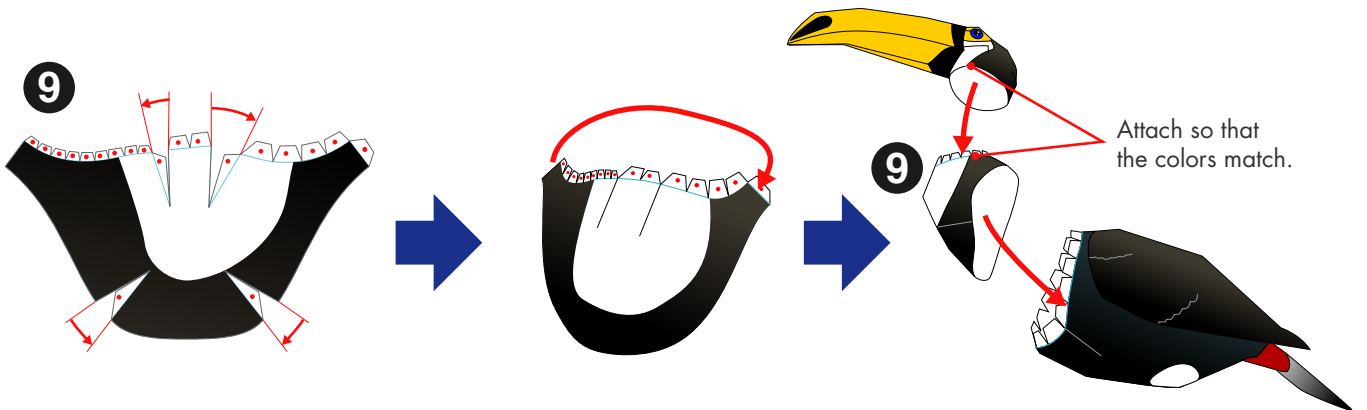
Assemble 6 and 7 and attach them to 5.



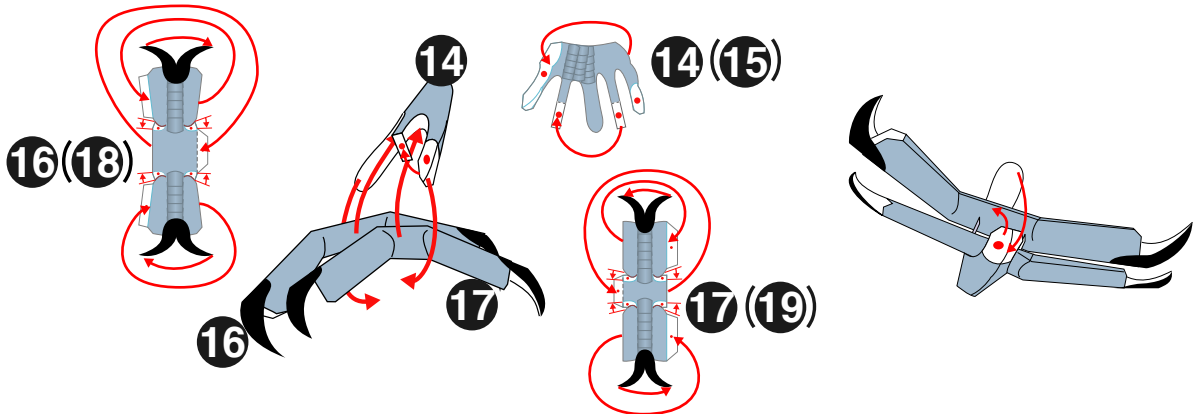
Assemble 8 and attach it to the body (5, 6, and 7).



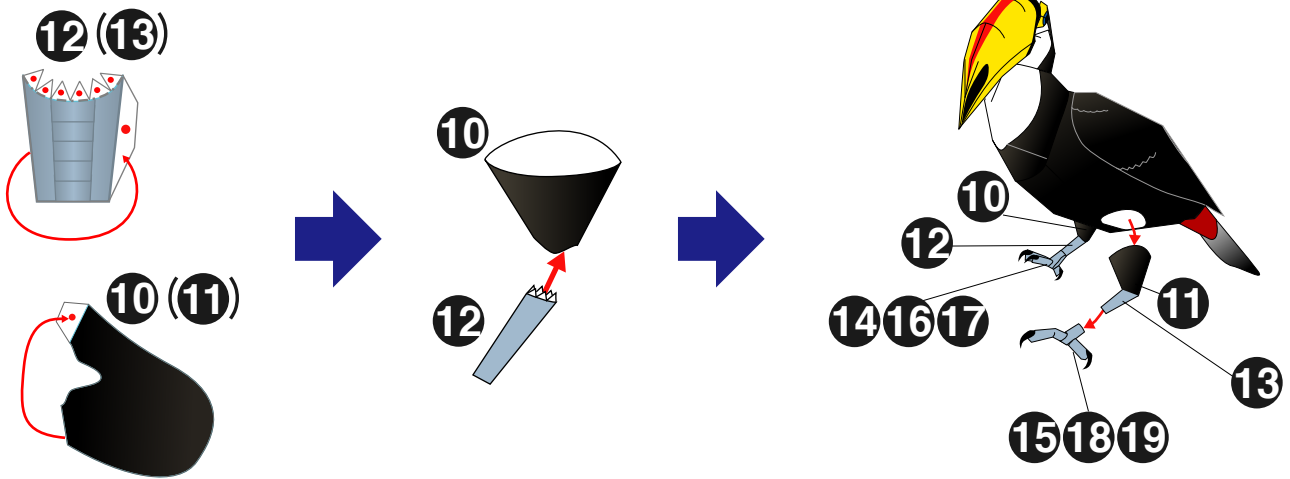
Assemble 9 and attach the body and head together.



Assemble 14, 16, and 17 (15, 18, and 19) to make the feet.



Assemble 10 and 12 (11 and 13) and attach them to the body.



Assemble 20, perch the bird on it, and you're done!

